

Sibylle Kramer | Iris van Hülst

INSIDE

INTERIORS OF
CONCRETE STONE WOOD

BRAUN



Schmälzle Delicatessen

Pfullingen

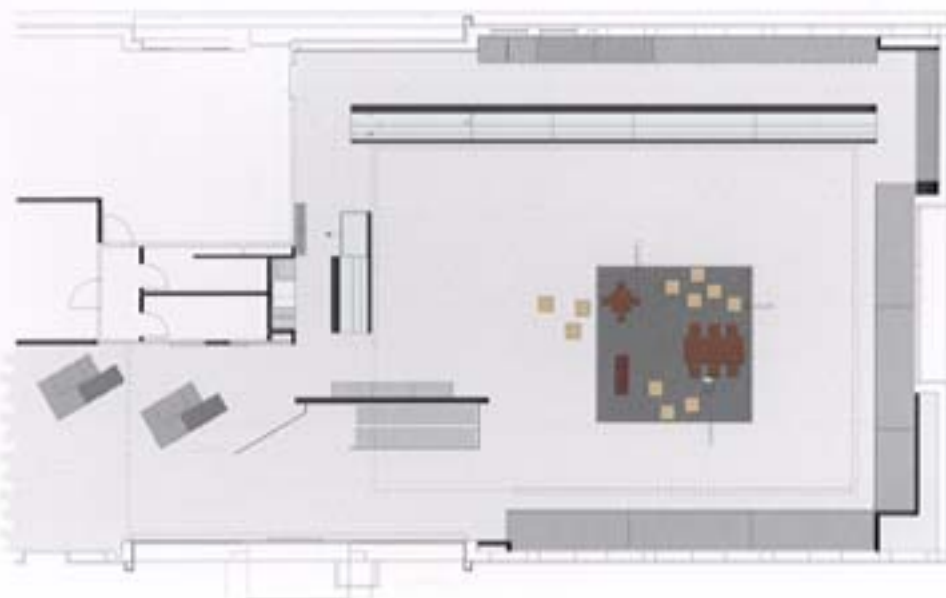
↖ | Sales counter. **WALLS:** tiles, type Royal Mosa, gray gloss; in the niches, Royal Mosa, white gloss. **LIGHTING:** fluorescent backlighting, spots by Erco.

↑ | Rest area. **FLOORS:** tiles, type Royal Mosa, grayish black, slate-like laying structure; suspended banner for dividing the circulation area from the customer service and sales areas. **FURNITURE:** stools - leather e15.

← | Ground plan

↗ | Sales area with customer service area, children's corner and rest area. **FLOORS:** sunk surface with Royal Mosa tiles, dark, with varied laying patterns and surfaces. **FURNITURE:** oak stool by Lars Zech, oiled oak table. **LIGHTING:** lighting by Steng Licht Stuttgart.

→ | View of the sales counter. **CEILING:** canted ceiling panel. **LIGHTING:** fluorescent backlighting, spots by Erco.



PROJECT FACTS

Address: Max-Eyth-Strasse 22, 72793 Pfullingen, Germany. **Builder-owner:** Thomas Schmälzle, Schmälzle Fleischwaren GmbH. **Completion:** 04.2006. **Main usable floor area:** 340 m².





Bakery Treiber

Leinfelden-Echterdingen

↖ | Detail of bread rack. **WALL COVERING:** Holzmaden slate. **LIGHTING:** backlighting from above through matt-surfaced glass.

↑ | Standing area with a view to the outside. **GLASS FACADE WITH GOLDEN LETTERS COUNTER:** metal dividers painted black, top plate in black pigmented MDF. **FURNITURE:** bar stool painted black, black leather cover.



← | Ground-level floor plan

↗ | General view of sales area. **FLOORS:** travertine. **WALL:** slate-covered wall plates. **CEILING:** amber tinted. **LIGHTING:** fluorescent floodlighting all around, built in slotlines by Zumtobel as general lighting in suspended ceiling panel.

→ | View of the hot food and coffee counter. **FURNITURE:** black pigmented MDF with polished pedestal of stainless steel, stainless steel bag rest. **INFOCARD:** suspended slate panel.

PROJECT FACTS

Address: Bernhäuser Strasse 5, 70771 Leinfelden-Echterdingen, Germany. **Builder-owner:** Wolfgang Treiber, Treiber GmbH Spezialitäten-Bäckerei-Konditorei. **Completion:** 11.2006. **Main usable floor area:** 86 m².

